

## Advantages of EdemaWear Over Existing Compression Garments:

1. EdemaWear is easy to put on and take off.
2. EdemaWear is comfortable. It is cool in hot weather. The spaces between the longitudinal wales of EdemaWear allow for perspiration to evaporate.
3. EdemaWear is inexpensive in comparison to compression textiles.
4. EdemaWear users report a *sense of comfort* while wearing EdemaWear. It is believed that EdemaWear enhances lymphatic function leading to a decrease inflammatory sensation at the level of the skin.
5. EdemaWear melts away swelling in the extremities. EdemaWear users prefer wearing EdemaWear because it is comfortable. Compliance is high.

**\* Not Made with Natural Rubber Latex \***

Materials: Medical Grade Lycra Spandex and Nylon

HCPCS Code when used on an open wound: A6457

### Compression Dynamics, LLC®

1018 Dodge Street, Suite 4  
Omaha, NE 68102

Tel: (402) 660-9834 Fax (402) 505-4690

Email: [info@EdemaWear.com](mailto:info@EdemaWear.com)

[www.EdemaWear.com](http://www.EdemaWear.com)



Revised 093021

## EdemaWear - Sizing Guide

SIZE	ARM/CALF/THIGH CIRCUMFERENCE	SITE
<b>Small</b> <b>Navy Stripe</b> Product Code #060001	Up to 18" (45cm) Stockinet Length: 22"	• Wrist to Shoulder • Foot to Knee
<b>Medium</b> <b>Yellow Stripe</b> Product Code #096001	Up to 30" (75cm) Stockinet Length: 34"	• Wrist to Shoulder • Foot to Knee or Groin
<b>Large</b> <b>Red Stripe</b> Product Code #120L001	Up to 46" (115cm) Stockinet Length: 24"	• Knee to Groin For Obese Individuals
<b>X-Large</b> <b>Aqua Stripe</b> Product Code #160XL01	Up to 60" (150cm) Stockinet Length: 24"	• Knee to Groin For Morbidly Obese Individuals
<b>Small LITE (For Tender Skin)</b> <b>Purple Stripe</b> Product Code #L060017	Up to 24" (60cm) Stockinet Length: 22"	• Wrist to Shoulder • Foot to Knee
<b>Medium LITE (For Tender Skin)</b> <b>Orange Stripe</b> Product Code #L096034	Up to 36" (90cm) Stockinet Length: 34"	• Wrist to Shoulder • Foot to Knee or Groin
<b>Small SHAPED (Cone-Shaped)</b> <b>Grey Stripe</b> Product Code #SH06018	Calf Up to 18" (45cm) Mid-Thigh Up to 24" (60cm) Stockinet Length: 30"	• Foot to Mid-Thigh

**Stockinets may be cut to length.**



## EdemaWear® Stockinets Comfortable Solution for Swelling

**\* Not Made with Natural Rubber Latex \***

U.S. Patents#: 8,034,013; 8,641,653; 9,259,373; 9,724,260  
Patent Pending in Canada  
WIPO/PCT# WO 2104/144790 A1





## About EdemaWear

EdemaWear utilizes technology developed at the University of Nebraska Medical Center, Fuzzy Wale Compression (FWC). Traditional compression garments are lymphatic tourniquets. FWC represents an enormous physiological advantage for users. Wales, fuzzy corduroy-like material, go up and down the extremity. Between the wales, Lycra® spandex elastic yarn provides compression. There is non-compressed skin between each wale with patent lymphatic vessels.

Over time, the wales press into the skin creating a *cornrow* furrow. In each cornrow furrow, tissue compression is high enough to be physiologically useful.

EdemaWear delivers compression via fuzzy longitudinal wales with transverse lycra elastic fibers. Our Physician researchers hypothesize that the areas of noncompressed skin between the longitudinal wales act as a zero pressure zone, which enhances lymphatic drainage from the skin furrows compressed under the wales.

## Caring For Your EdemaWear

The recommended care for EdemaWear is to hand or machine wash in cold water and to hang dry. Bloodstains may be removed with hydrogen peroxide.

The approximate life of EdemaWear being worn daily is around 4–6 months, and may be even longer in nonambulatory patients. It should be removed daily for bathing and repositioning.

## How To Put On EdemaWear

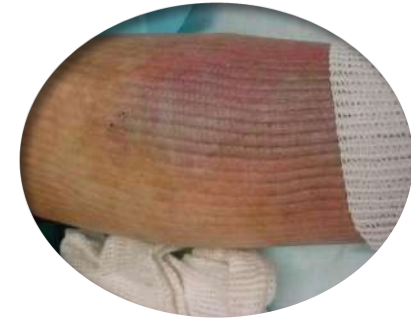
Most users put EdemaWear on by rolling the stocking like a sock then placing it onto the arm or foot and unrolling it towards the body.

EdemaWear can be placed on a swollen, painful extremity by placing a plastic bag on the foot or hand. Pull the EdemaWear stockinet over and above the plastic bag, remove the bag and draw the stockinet down over the foot or hand.

EdemaWear can be cut to length. It will not unravel.

To prevent EdemaWear from rolling down on the limb, turn over the end of EdemaWear making a 3" cuff. EdemaWear can also be turned inside out.

If wearing socks, wear them over top of EdemaWear. EdemaWear should be in direct contact with the skin.



## Uses of EdemaWear

EdemaWear is used for the following conditions with dramatic response:

- Swelling (edema) of all types.
- Venous insufficiency, a condition where the veins of the lower extremity cannot return blood to the heart.
- Lymphedema, swelling resulting from dysfunction of lymph channels of the lower or upper extremity.
- Congestive heart failure, a condition where the heart is unable to pump blood forward effectively, leading to lower extremity edema.
- Skin protection, to protect *at risk* senile skin from bruising and shear injury (skin tear).

